



Princes Road, Petersfield

**£1,200 Per Month**



**Williams of Petersfield**

INDEPENDENT ESTATE AGENTS



## Princes Road, Petersfield

A spacious first floor apartment in great condition a moment from Petersfield Town Centre and the Mainline train station.

The property has a modern kitchen and bathroom as well as lovely decor. The property is finished to a high standard.

There are two allocated parking spaces for the apartment and additional on street parking is also available.

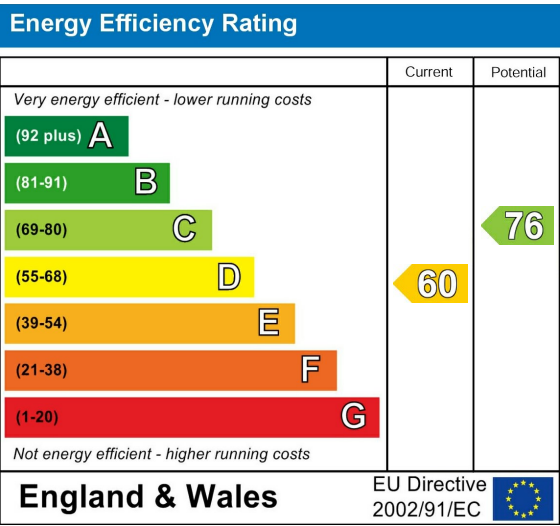
Council tax - Band B

EPC - Band D

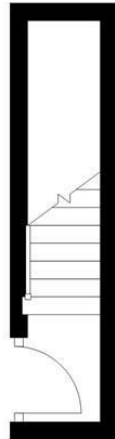
Available from the beginning of March 26

Strictly no pets.

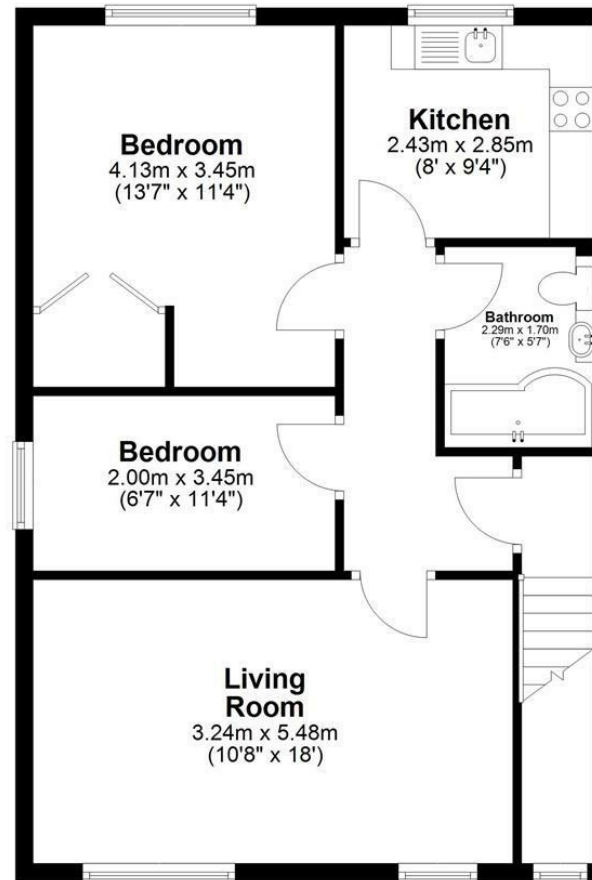




**Ground Floor**  
Approx. 3.8 sq. metres (40.9 sq. feet)



**First Floor**  
Approx. 61.4 sq. metres (660.6 sq. feet)



Total area: approx. 65.2 sq. metres (701.6 sq. feet)

This plan has been produced by E Property Marketing for illustrative purposes only and should be used as such by any prospective purchaser. Whilst every effort has been made to ensure the accuracy of this plan, measurements of doors, windows, rooms, and other items are approximate. No responsibility is taken for any error, omission, or misstatement.

## Williams of Petersfield

6 - 8 College Street, Petersfield, Hampshire, GU31 4AD

01730 233333 sales@williamsopetersfield.co.uk www.williamsopetersfield.co.uk

The Property Misdescriptions Act 1991: The Agent has not tested any apparatus, equipment, fixtures and fittings or services and so cannot verify that they are in working order or fit for the purpose. A buyer is advised to obtain verification from their solicitor or surveyor. References to the tenure of a property are based upon information supplied by the seller. The agent has not had sight of the title documents. A buyer is advised to obtain verification from their solicitor. Items shown in photographs are NOT included unless specifically mentioned within the sales particulars. They may however be available by separate negotiation. Buyers must check the availability of any property and make an appointment to view before embarking on any journey to see a property.